

cromox Grade 6 Pump Lifting Chain

The William Hackett Grade 6 cromox pump lifting chains are manufactured by KETTEN WALDER in Germany using the highest quality of stainless steel to achieve market leader quality products. All chains are manufactured on state of the art modern machinery and are proof loaded to 2.5 x WLL with a factor of safety 4:1.

As with all William Hackett Lifting Products they have full traceability through our Assure System.

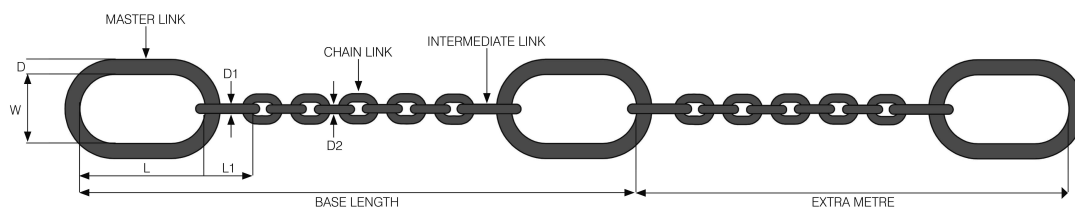
Grade 6 Stainless Steel Pump Lifting Chain fitted with Lifting Points at each end and at approx. 1m centres. Alternative lifting centres and configurations, i.e. double leg or triple leg branch to suit your individual needs can be manufactured.

Production Features

- Manufactured from corrosion resistant Stainless Steel to EN 10088 / EN 10027-2 / 1.4404 or 1.4462 (AISI 316LN - Duplex).
- Assembled, Welded and Tested at Ketten Walder, Germany
- Cromox grade 6 pump chains will support written schemes of extended examination up to 3 years.
- Manufactured in accordance with LEEA 069-2 specification for stainless steel submersible pump lifting chains.

Quality Features

- Full traceability for all components used in manufacturing process
- Chain links are embossed with manufacturer's mark and batch number every 20 links or 1m which ever is the lesser
- Every Master Link embossed with cromox and our traceability Batch Number
- All assemblies are Proof Load Tested to 2.5 x W.L.L.
- Factor of Safety: 4 : 1
- Full certification supplied with every sling in accordance with Machinery Directive 2006 / 42 / EC



Finish: Polished Proof Tested and Certified Proof Load 2.5 x W.L.L. F.O.S. 4 : 1

Part Code	Chain Dia. (mm) D2	D1 mm	L1 mm	D mm	L mm	W mm	WLL tonnes
SS-CPK05063	5	6	26	10	80	50	630 Kg
SS-CPK07125	7	8	35	13	110	60	1.25
SS-CPK09200	9	13	54	16	110	60	2.0
SS-CPK13385	13	16	70	22	160	90	3.85
SS-CPK16500	16	18	85	22	160	90	5.0

SS-CPK18800	18	22	115	26	180	100	8.0
SS-CPK22110	22	26	140	36	260	140	11.0
SS-CPK26150	26	45	320	45	320	175	15.0

6 sided Identification Tally: (fixed permanently)

Identification of the manufacturer (name or symbol or recognised mark)

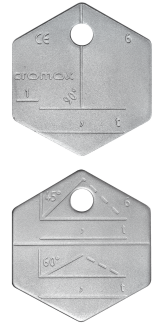
Identification of material grade ie: Grade 6 316 Stainless

Nominal chain size and number of legs

Sling I.D. Number / Asset Number

Year of manufacture

CE Mark



Mechanical properties (all components must be designed accordingly)

Breaking stress 630 N/mm²

Breaking elongation 25%

Stress at MTF (Manufacturing Test Force) 400N/mm²

Stress at WLL (Working Load Limit) 160 N/mm²

Minimum Factor of Safety 4:1