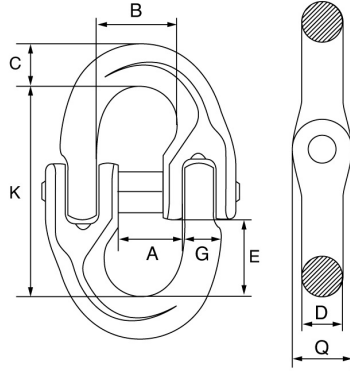


Cobra Plus Grade 10 Component Connector – 1001



- Grade 10 alloy steel, quenched and tempered.
- Blue painted finish.
- Meets W.L.L. perf. req. of BS EN 1677-1 +25% of loads.
- Temp. Range -20°C up to +200°C.
- M.B.L. equals 4 x W.L.L.
- Marked with Cobra+, material grade, size, product ID mark and traceability code.
- Certs available **2.1** **DoC**

Product Code	Chain Dia	A	B	C	D	K	E	G	Q
	mm	mm	mm	mm	mm	mm	mm	mm	mm
G100CC6	6	14	16.9	8.5	7	44.5	16	7.4	12
G100CC8	8	18.5	22.7	10.5	10	63	24	10.2	14
G100CC10	10	23	27.7	12.6	12.6	71	28	12.6	18
G100CC13	13	28	33.2	16.5	16.5	92.5	34	17	23

Product Code	Chain Dia	A	B	C	D	K	E	G	Q
	mm	mm	mm	mm	mm	mm	mm	mm	mm
G100CC16	16	33.5	39	20	20	106.5	39	20	29.5
G100CC20	20	42	47.3	25	25	123	42	25.5	35.5
G100CC22	22	48	55	27	27	137.5	50	27	39
G100CC26	26	61	68	32	32	163	63	32	45
G100CC32	32	80	87	40	40	197	78	38.5	54

Technical Data

Chain Dia	W.L.L.	M.P.F.	M.B.F.	Weight
mm	t	t	t	kgs
6	1.4	3.5	5.6	0.08
8	2.5	6.25	10	0.17
10	4	10	16	0.34
13	6.7	16.75	26.8	0.68
16	10	25	40	1.22
20	16	40	64	2.13
22	19	47.5	76	3
26	26.5	66.25	106	5.22
32	40	100	160	9.55