

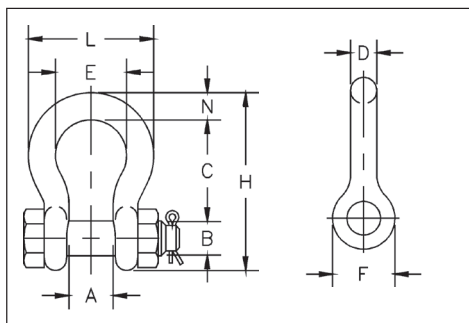


- Capacities 2 to 17 metric tons.
- Working Load Limit permanently shown on every shackle.
- Forged Alloy Steel – Quenched and Tempered, with bow and bolt.
- Hot Dip galvanized.
- Shackles can be **RFID EQUIPPED**.
- Meets or exceeds all requirements of ASME B30.26 including identification, ductility, design factor, proof load and temperature requirements. Importantly, these shackles meet other critical performance requirements including impact properties and material traceability, not addressed by ASME B30.26.
- Shackles can be furnished proof tested with certificates to designated standards, such as ABS, DNV, Lloyds, or other certification when requested at time of order.
- Type Approval and certification in accordance with DNV Type Approval under DNV 2.7-1.
- Shackles are Quenched and Tempered and meets DNV impact requirements of 42 joules (31 ft. lbs.) at -40 degree C (-40 degree F).



G-2130A

Bolt Type Anchor shackles with thin head bolt – nut with cotter pin. Meets the performance requirements of Federal Specification RR-C-271D Type IVA, Grade A, Class 3, except for those provisions required of the contractor. For additional information, see General Catalog.



G-2130A



Nominal Size (in.)	Working Load Limit (t)*	G-2130A Stock No.	Weight Each (kg)	Dimensions (mm)									Tolerance +/-	
				A	B	C	D	E	F	H	L	N	C	A
1/2	2	12194724	.36	20.6	16.0	47.8	12.7	33.3	30.2	83.5	58.5	12.7	3.30	1.50
5/8	3-1/4	12194914	.62	26.9	19.1	60.5	16.0	42.9	38.1	106	74.5	17.5	6.35	1.50
3/4	4-3/4	12195164	1.23	31.8	22.4	71.5	19.1	51.0	46.0	126	89.0	20.6	6.35	1.50
7/8	6-1/2	12195344	1.79	36.6	25.4	84.0	22.4	58.0	53.0	148	102	24.6	6.35	1.50
1	8-1/2	12195524	2.28	42.9	28.0	95.5	25.4	68.5	60.5	167	119	26.9	6.35	1.50
1-1/8	9-1/2	12195784	3.75	46.0	31.8	108	28.7	74.0	68.5	190	131	31.8	6.35	1.50
1-1/4	12	12195984	5.31	51.5	35.1	119	31.8	82.5	76.0	210	146	35.1	6.35	1.50
1-3/8	13-1/2	12196144	7.18	57.0	38.1	133	35.1	92.0	84.0	233	162	38.1	6.35	3.30
1-1/2	17	12196324	8.62	60.5	41.4	146	38.1	98.5	92.0	254	175	41.1	6.35	3.30

* NOTE: Maximum Proof Load is 2.0 times the Working Load Limit. Minimum Ultimate Strength is 8 times the Working Load Limit. For Working Load Limit reduction due to side loading applications, see the General Catalog.

Crosby Europe:

BELGIUM
Industriepark Zone B n°26
2220 Heist-op-den-Berg

P: (+32) (0)15 75 71 25
F: (+32) (0)15 75 37 64
sales@crosbyeurope.com

9992180

FRANCE
21, rue du Petit Albi
Parc d'Affaires Silic
95800 Cergy - St. Christophe
P: (+33) (0)1 34 201 180
F: (+33) (0)1 34 201 188
sales@crosbyeurope.fr

THE NETHERLANDS
Celsiusstraat 51
P.O. Box 518
6710 BM Ede
P: (+31) (0)318 690 999
F: (+31) (0)318 690 933
sales@crosbyeurope.nl

UNITED KINGDOM
Station Street
Cradley Heath
West Midlands B64 6AJ
P: (+44) (0)1226 290 516
F: (+44) (0)1226 240 118
sales@crosbyeurope.co.uk