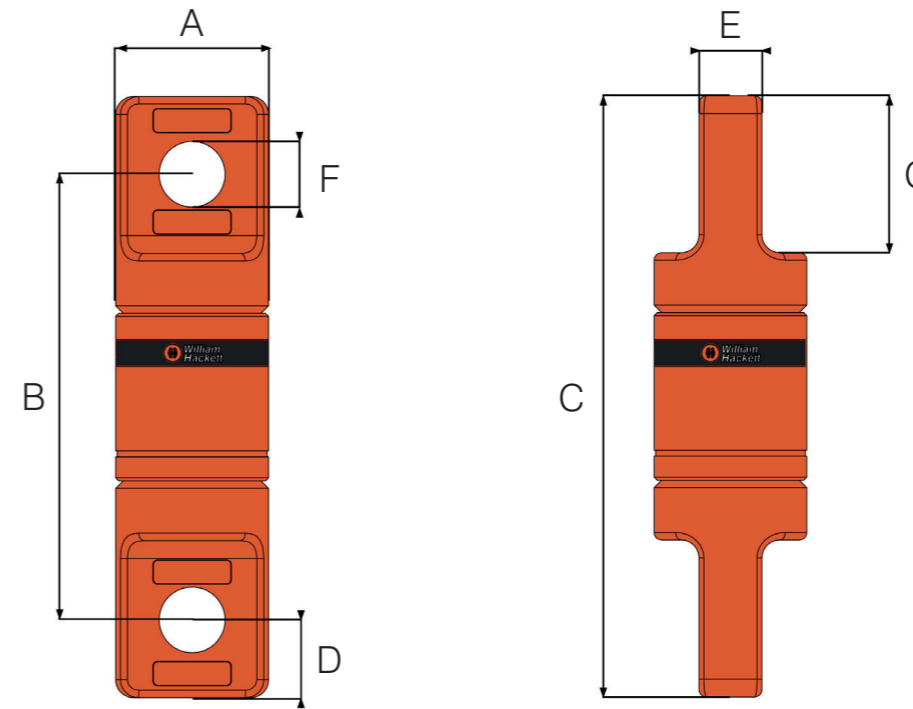


## HA<sup>®</sup> Eye + Eye Contact Angular Swivel

### HA<sup>®</sup> Eye + Eye Contact Angular Swivel

The HA eye + eye contact angular swivel is specially designed for lifting applications that involve high rotational speed. The eye + eye configuration enables easy connection between other lifting components, such as HA master links or wire rope thimbles.

- Standards:** designed and manufactured in accordance with ASME B30.26.
- Product sizes:** available with working load limits from 0.75 tonnes up to 25 tonnes.
- Material:** manufactured from alloy steel.
- Maintenance:** built in grease nozzle for easy maintenance and enhanced operational performance.
- Temperature:** operational temperature range of - 40°C to + 200°C without reduction in working load limit.
- Testing:** 100% magnaflux crack detected, and 20,000 cycle fatigue rated to 1.5 times working load limit.
- Safety factor:** 4 : 1.



### Specifications

Part Code	Wire Rope Dia. mm	WLL t	A mm	B mm	C mm	D mm	E mm	F mm	G mm	Mass kg
8-H32-0075	6	0.75	34	107	133	13	12	10.5	35	0.8
8-H32-015	10	1.50	40	119	159	20	15	13.5	46	1.2
8-H32-03	13	3.00	53	160	210	25	20	20.0	57	2.2
8-H32-05	16	5.00	67	203	267	32	26	33.0	69	5.1
8-H32-085	19	8.50	78	250	326	38	32	37.0	92	8.5
8-H32-10	22	10.00	106	310	410	50	42	44.0	104	23.0
8-H32-15	25	15.00	119	320	440	60	49	54.0	117	29.0
8-H32-25	32	25.00	137	405	545	70	60	66.0	140	46.0

## HA<sup>®</sup> Eye + Eye Contact Angular Swivel

### HA<sup>®</sup> Eye + Eye Contact Angular Swivel

The HA eye + eye contact angular swivel is specially designed for lifting applications that involve high rotational speed. The eye + eye configuration enables easy connection between other lifting components, such as HA master links or wire rope thimbles.

**Standards:** designed and manufactured in accordance with ASME B30.26.

**Product sizes:** available with working load limits from 0.75 tonnes up to 25 tonnes.

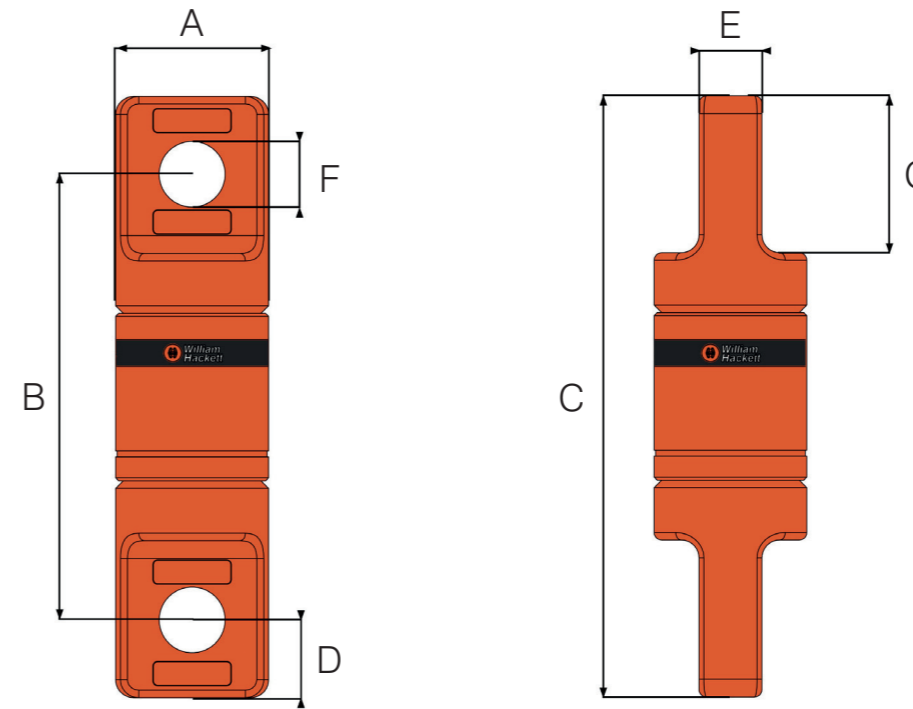
**Material:** manufactured from alloy steel.

**Maintenance:** built in grease nozzle for easy maintenance and enhanced operational performance.

**Temperature:** operational temperature range of - 40°C to + 200°C without reduction in working load limit.

**Testing:** 100% magnaflux crack detected, and 20,000 cycle fatigue rated to 1.5 times working load limit.

**Safety factor:** 4 : 1.



### Specifications

Part Code	Wire Rope Dia. inch	WLL t	A inch	B inch	C inch	D inch	E inch	F inch	G inch	Mass lbs
8-H32-0075	1/4	0.75	1.34	4.21	5.24	0.51	0.47	0.41	1.38	1.76
8-H32-015	3/8	1.50	1.57	4.69	6.26	0.79	0.59	0.53	1.81	2.65
8-H32-03	1/2	3.00	2.09	6.30	8.27	0.98	0.79	0.79	2.24	4.85
8-H32-05	5/8	5.00	2.64	8.00	10.51	1.26	1.02	1.30	2.72	11.24
8-H32-085	3/4	8.50	3.07	9.84	12.83	1.50	1.26	1.46	3.62	18.74
8-H32-10	7/8	10.00	4.17	12.20	16.14	1.97	1.65	1.73	4.09	50.71
8-H32-15	1	15.00	4.69	12.60	17.32	2.36	1.93	2.13	4.61	63.93
8-H32-25	1-1/4	25.00	5.39	15.94	21.46	2.76	2.36	2.60	5.51	101.41