
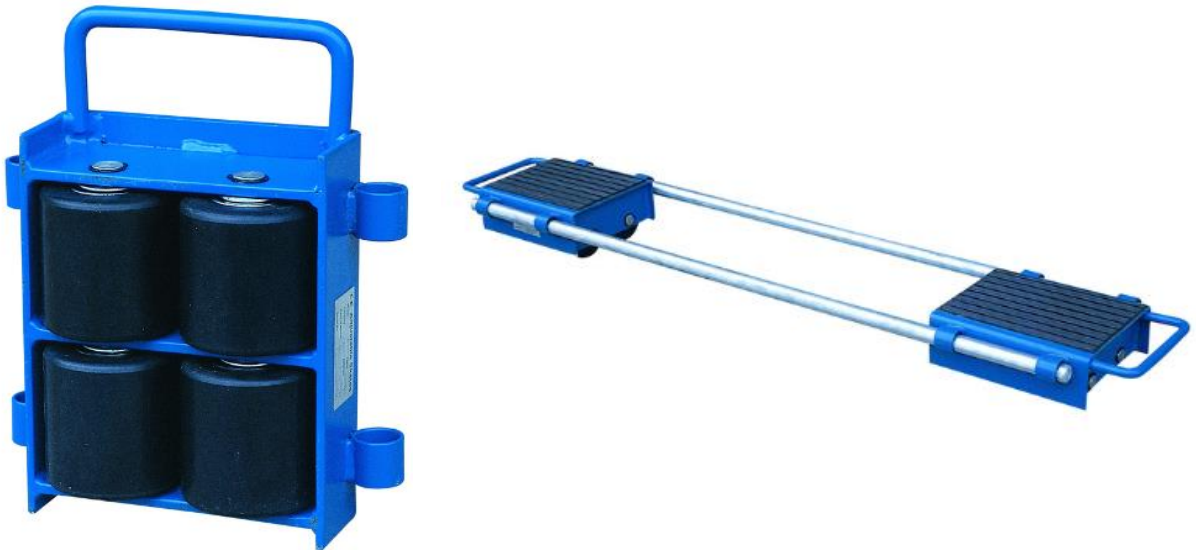


LES REAR ADJUSTING SKATES

CM60/120/240

LES
LIFTING EQUIPMENT STORE™

Finish	Blue Paint
Standards	EN349:1993+A1:2008 / EN ISO 12100:2010
Directives	The Machinery Directive 2006/42/EC, Machinery (Safety) Regulations 2008
Markings / Certification	
Notes	



Model	Capacity Per Pair	No. of Rollers	Size	Weight
CM60	6,000kg	8 Nylon	300x250x115mm	30kg
CM120	12,000kg	12 Nylon	360x220x115mm	38kg
CM240	24,000kg	16 Steel	360x220x115mm	65kg