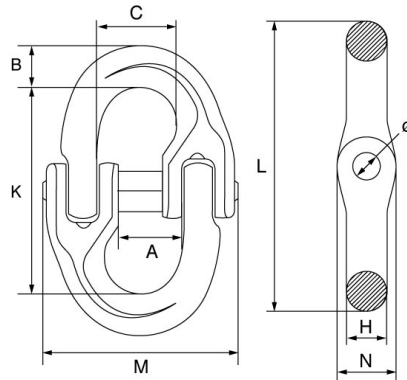


Onyx Grade 80 Component Connector – OXCC




ONYX

- Grade 80 alloy steel, quenched and tempered.
- Matte black painted.
- Meets the W.L.L. perf. req. of BS EN 1677-1.
- -20°C up to +200°C.
- M.B.L. equals 4 x W.L.L.
- Marked with ONYX, material grade, size, product ID mark and traceability code.
- Certs available **2.1** **DoC**

| Product Code | Chain Dia | A | B | C | H | K | L | M | N | Ø |
|--------------|-----------|------|----|----|------|----|-----|------|------|------|
| | mm | mm | mm | mm | mm | mm | mm | mm | mm | mm |
| OXCC8 | 7/8 | 20.5 | 9 | 24 | 8.8 | 58 | 77 | 55 | 14.8 | 6.3 |
| OXCC10 | 10 | 26 | 12 | 28 | 11.5 | 69 | 92 | 69 | 17.8 | 8.1 |
| OXCC13 | 13 | 30 | 15 | 35 | 15 | 85 | 115 | 86.6 | 25 | 10.3 |

Technical Data

| Product Code | Chain Dia mm | W.L.L. t | M.P.L. t | M.B.L. t | Weight kgs | PDF |
|--------------|-----------------|-------------|-------------|-------------|---------------|---|
| OXCC8 | 7/8 | 2 | 4 | 8 | 0.15 |  |
| OXCC10 | 10 | 3.15 | 6.3 | 12.6 | 0.32 |  |
| OXCC13 | 13 | 5.3 | 10.6 | 21.2 | 0.69 |  |