

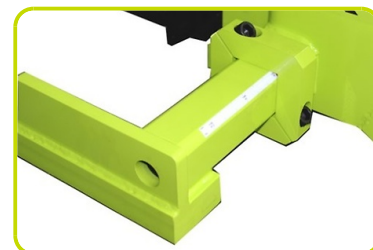
TX 10/16 STRADDLE

THE RAISING POWER



TX STRADDLE

The TX series stackers are characterized by manual traction and electrohydraulic lifting technology. These stackers are very steady and are suitable for lifting very heavy loads safely. Version 12 (1.2 t) includes polyurethane wheels as standard to reduce resistance and effort required even with full load capacity. The main feature of the Straddle series is the possibility to adjust the forks and the clamps for great versatility in the handling of loads of different sizes.



START KEY AND BATTERY CUT-OFF (ISOLATOR) SWITCH

The start key on the TX stacker performs a double function:

- switches the stacker on/off;
- is an emergency control, i.e. it completely stops battery power supply and thus prevents the lifting of forks.



FOOT BRAKE

The foot brake, which is available on the MX and TX machines, performs the parking brake function.



TILLER

The ergonomic tiller allows an excellent directionality of the machine, thanks to a steering system on both rear wheels.



ADJUSTABLE BUFFERS

The TX 12 version is equipped with adjustable buffers that minimize possible oscillation during lifting.



PROTECTIVE COVER

It allows an easier access to the battery housing for faster ordinary maintenance.



Description

| | | | | |
|----------------------------|---|----|--|------------|
| 1.1 Manufacturer | | | | LIFTER |
| 1.3 Drive | | | | Manual |
| 1.4 Operator type | | | | Pedestrian |
| 1.5 Load capacity | Q | Kg | | 1000 |
| 1.6 Load centre distance | c | mm | | 600 |
| 1.8 Load axle to end forks | x | mm | | 755 |
| 1.9 Wheel base | y | mm | | 1130 |

Weights

| | | | |
|---------------------------------------|----|--|-----|
| 2.1 Service weight (battery included) | Kg | | 415 |
| 2.2 Axle load, laden rear | Kg | | 962 |
| 2.2 Axle load, laden front | Kg | | 453 |
| 2.3 Axle load, unladen front | Kg | | 270 |
| 2.3 Axle load, unladen rear | Kg | | 145 |

Tyres/Chassis

| | | |
|--|--------|--------|
| 3.1 Tyres: stabilizers wheels - front | | RUBBER |
| 3.1 Tyres: rear wheels | | NYLON |
| 3.3 Tyre size: Load rollers - Diameter | mm | 82 |
| 3.3 Tyre size: Load rollers - Width | mm | 70 |
| 3.4 Tyre size: stabilizers wheels front - Diameter | mm | 200 |
| 3.4 Tyre size: stabilizers wheels front - Width | mm | 50 |
| 3.5 Tyre size: rear wheels - Q.ty (X=driven) | nr | 2 |
| 3.6 Tread, front | b10 mm | 620 |
| 3.7 Tread, rear min | b11 mm | 1080 |
| 3.7 Tread, rear max | b11 mm | 1387 |

Dimensions

| | | |
|--|--------|----------|
| 4.2 Height, mast lowered | h1 mm | 1970 |
| 4.3 Normal free lifting | h2 mm | 1510 |
| 4.4 Lift height | h3 mm | 1510 |
| 4.5 Height, mast extended | h4 mm | 2045 |
| 4.9 Height of tiller in drive position max | h14 mm | 1080 |
| 4.15 Height, lowered | h13 mm | 35 |
| 4.19 Overall length | l1 mm | 1640 |
| 4.20 Length to face of forks | l2 mm | 640 |
| 4.21 Overall width min | b1 mm | 750/1199 |
| 4.21 Overall width max | b1 mm | 750/1504 |
| 4.22 Fork dimensions - Thickness | s mm | 35 |
| 4.22 Fork dimensions - Width | e mm | 100 |
| 4.22 Fork dimensions - Length | l mm | 1000 |
| 4.24 Fork carriage width | b3 mm | 825 |
| 4.25 Distance between fork arms max | b5 mm | 790 |
| 4.25 Distance between fork arms min | b5 mm | 230 |
| 4.26 Distance between legs min | b4 mm | 965 |
| 4.26 Distance between legs max | b4 mm | 1270 |
| 4.32 Ground clearance, centre of wheelbase | m2 mm | 40 |
| 4.34 Aisle width | Ast mm | 2588 |
| 4.35 Turning radius | Wa mm | 1790 |

Performance data

| | | |
|----------------------------|-----|------|
| 5.2 Lifting speed laden | m/s | 0.09 |
| 5.2 Lifting speed unladen | m/s | 0.12 |
| 5.3 Lowering speed laden | m/s | 0.4 |
| 5.3 Lowering speed unladen | m/s | 0.1 |

Electric motors

| | | |
|---------------------------------|-------|-----|
| 6.2 Lift motor power | kW | 1.6 |
| 6.4 Battery voltage | V | 12 |
| 6.4 Battery capacity, Min | Ah | 74 |
| 6.4 Battery capacity, Max | Ah | 74 |
| 6.5 Battery weight, Min | Kg | 18 |
| 6.5 Battery weight, Max | Kg | 18 |
| 8.4 Sound level at driver's ear | dB(A) | 67 |

* Integrated battery and charger

