

# Manual wire rope winches

## Manual wire rope winch OMEGA

Developed for special challenges: the OMEGA manual wire rope winch offers perfect functional safety in areas such as the ATEX (explosion protection) or offshore ones. The OMEGA BGV D8 and

OMEGA OFFSHORE versions are prepared for manual operation and operation via an external motor-powered drive.

### Equipment and processing

#### OMEGA BGV D8

- Carrying loads 1000 kg

#### OMEGA Offshore

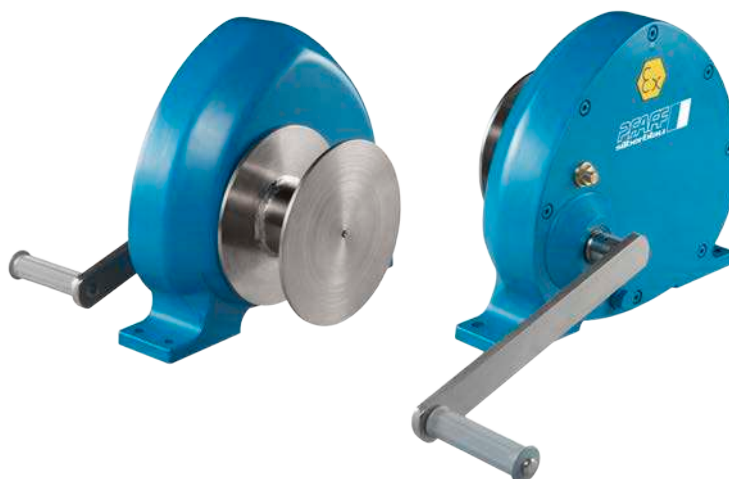
- Carrying loads 800 kg
- External motorized drive possible

#### OMEGA ATEX

- Carrying loads 1000 kg
- Use in the areas EX II 2 DG ck 195° C (II T3)

#### Standard equipment

- Removable hand crank
- Encapsulated gearbox – running in oil bath
- High-quality painting to improve corrosion protection



### Technical data

Model	Art. no.	Capacity 1 <sup>st</sup> layer	Capacity 4 <sup>th</sup> layer top layer	Rope-Ø	Useable rope length 1 <sup>st</sup> layer	Useable rope length 4 <sup>th</sup> layer	Lift per crank rotation 1 <sup>st</sup> layer	Lift per crank rotation 4 <sup>th</sup> layer
		kg	kg	mm	m	m	mm	mm
OMEGA BGV D8	192010587	1000	692	8*	1.6	13.1	29	42
OMEGA ATEX	192010588	1000	692	8*	1.6	13.1	29	42
OMEGA Offshore	192010589	800	800	10**	1.2	4.3	30	35

Model	Art. no.	Req. crank effort (full load)	Driving torque	Max. load cycles per hour full load	Input speed	Duty ratio	Weight w/o rope max.
		daN	Mta Nm		Mta 1/min		kg
OMEGA BGV D8	192010587	17	54	-	100	S3-50%	ca. 38
OMEGA ATEX	192010588	17	3	3	-	-	ca. 38
OMEGA Offshore	192010589	17	54	-	100	S3-50%	ca. 38

\*recommended rope: DIN 3069 SE 1960 N/mm<sup>2</sup>

\*\*recommended rope: DIN 3069 SE 1770 N/mm<sup>2</sup>

