

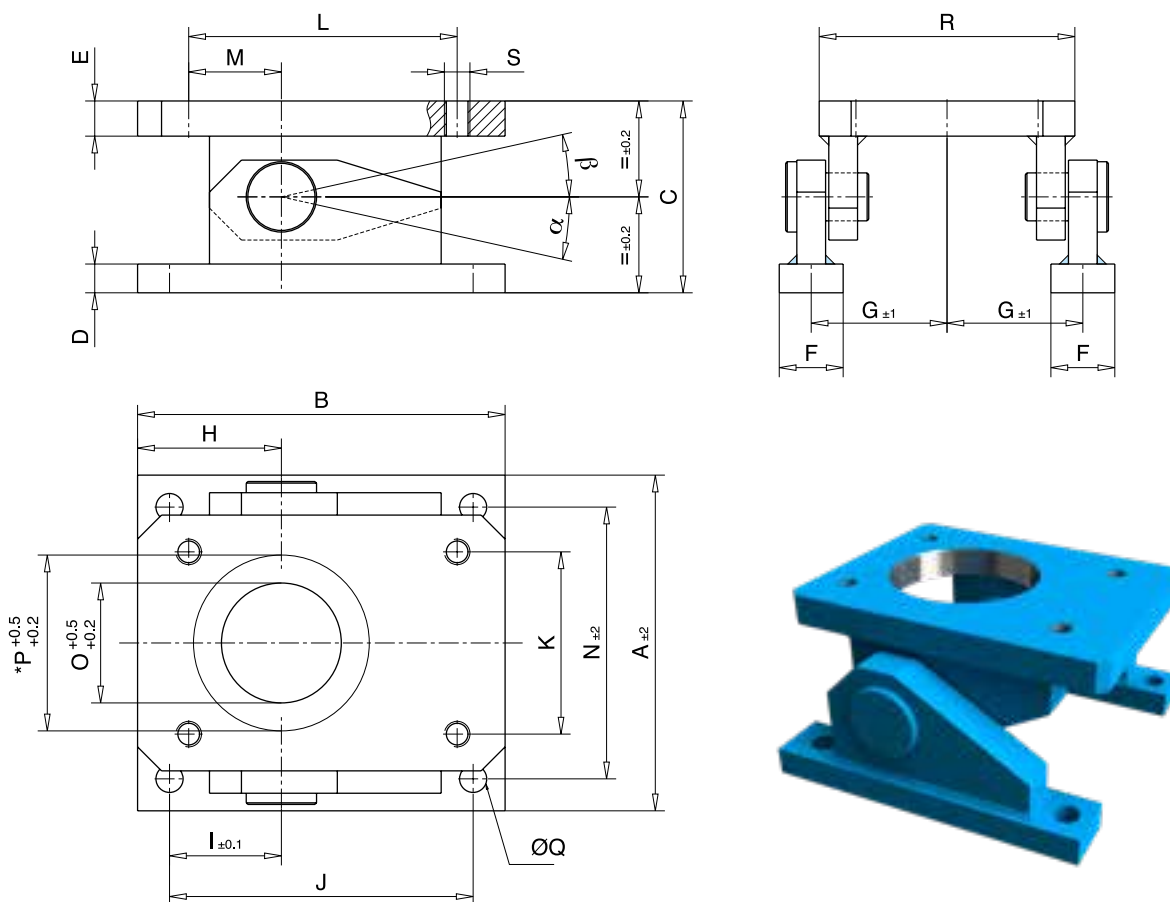
Accessories

Swivel mounting bases

Technical drawings: Swivel mounting bases

In order to allow worm gear screw jacks to carry out swiveling and tipping movements, the drive elements must be secured at two points and permitted to move. This can be done using a swiveling bearing and a head IV or articulated head, or by means of a

swivel-lug configuration. The lateral force resulting from the swiveling motion should be minimized as much as possible by means of low-friction articulations.



Only the most recent dimension plans are binding.

Dimensions: Swivel mounting bases

Size	A	B	C	D	E	F	G	H	I	J	K	L	M	N	O	P*	ØQ	R	S	[α°]	[β°]
SHE 1.1	150										80	130	58		80	80					
HSE 32	138	138	60	10	10	20	60	54	40	110	62	95	31	120	62	62	9	108	M8	26	42
HSE 36.1	138										80	110	40		72	72					
SHE 3.1	180	170	110	16	20	40	70	65	50	140	90	135	50	140	70	70	14	130	M12	35	55
HSE 50.1											100	140	50		100	100				25	
SHE 5.1	210	230	120	18	22	40	85	90	70	190	114	168	58	170	110	110	17	160	M16	28	44
HSE 63.1											120	190	70		122	122					
SHE 15.1	270	270	150	22	28	50	110	100	75	220	155	190	63,5	220	130	130	21	200	M20	28	45
HSE 80.1											150	220	75		152	152					
SHE 20.1	350	340	190	30	33	60	145	130	95	280	160	240	95	290	100	160	26	260	M24	30	45
HSE 100.1											175	270	87,5		185	185					

*only applies to anti-turn device