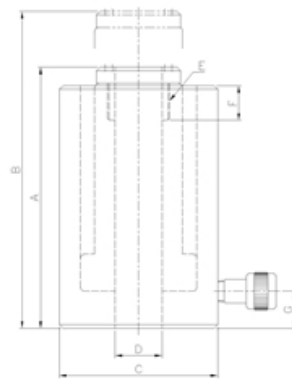


Single Acting Center Hole Cylinders

- Capacity: 10 - 100 tons.
- Stroke: 41 - 75mm.
- Maximum Pressure: 700 Bar.
- Hydraulic Coupler: TBC 381F(PT3/8)
- Designed for use with screws, rods, cables & pullers.

Understanding the Model No: TCH-1041

- **T** - TECPOS
- **CH** - Center Hole Cylinder
- **10** - Capacity, 10ton
- **41** - Stroke, 41mm



Dimensions

Model	Cyl. Cap. (tons)	Stroke (mm)	Cyl. Effective Area (cm ²)	Oil Cap. (cc)	Retracted Height A	Extended Height B	Cyl. Out Dia. C	Centre Hole Dia. D	Collar Thread E	Collar Thread Length. F	Base to Inlet Port G	Weight (kgs)	Pump
TCH-1041	10	41	17.6	70.5	121	162	70	20	-	-	25	2.8	1B
TCH-2050	20	50	31.67	158.4	162	212	98	27	1 9/16	24	20	7.6	1B
TCH-3063	30	63	47.7	300.6	179	242	115	33	M48xP1.5	20	21	10.9	1B
TCH-5075	50	75	87.46	656	249	324	158	54	M70xP2	28	30	27.2	1C
TCH-10075	100	75	143.13	1049	254	329	216	80	M103xP2	28	35	52.5	1C